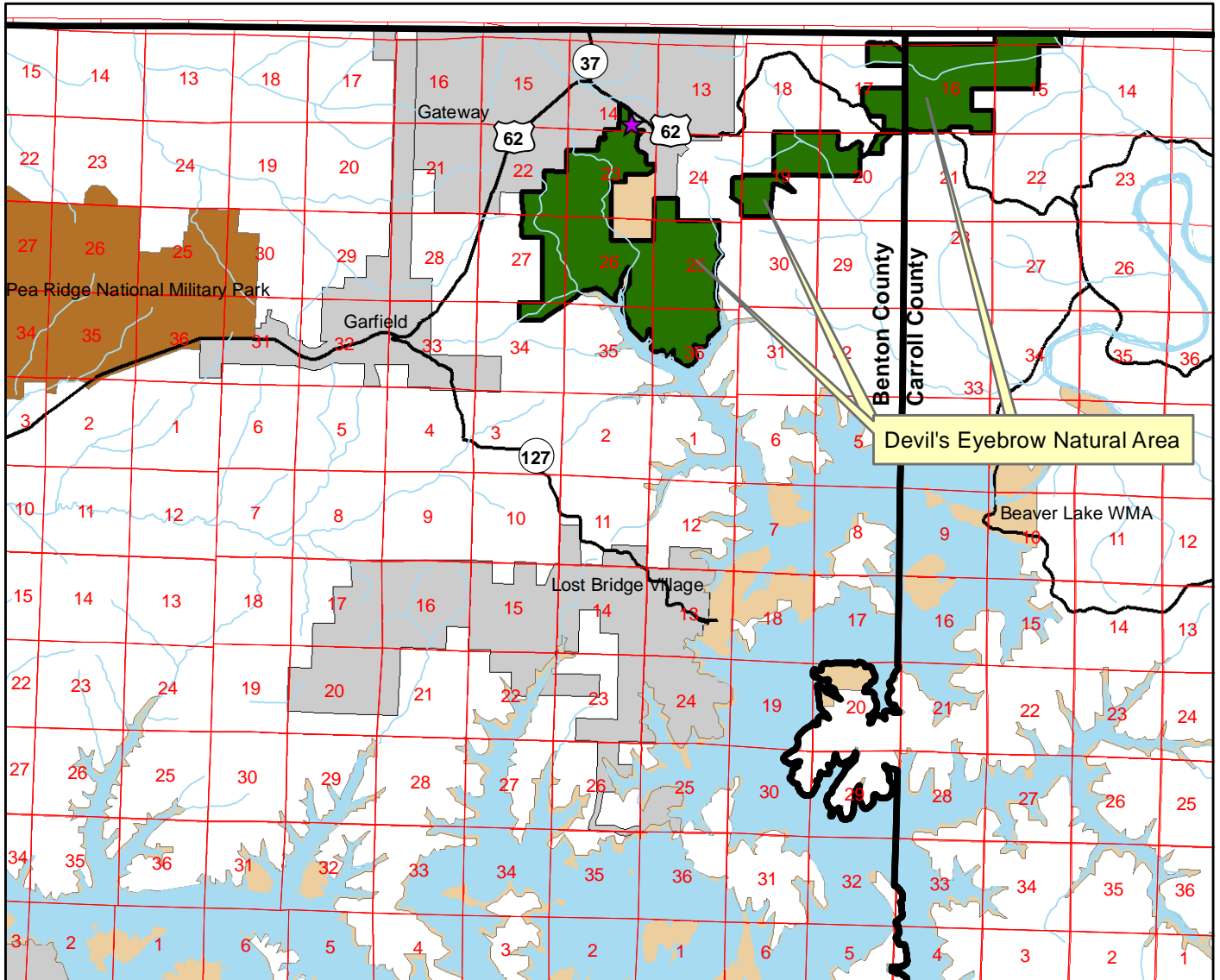


Arkansas Natural Heritage Commission
Division of Arkansas Heritage
Arkansas Department of Parks, Heritage and Tourism
Devil's Eyebrow Natural Area



★ Parking

Devil's Eyebrow Natural Area

County: Benton Date Added To System: 2012 Acreage: 3600.531

Latitude/Longitude of Parking: 36.48341/-93.92271

Directions: From the town of Garfield, travel east on U.S. Highway 62 for 4 miles to the community of Gateway. From the junction of Highways 62 and 37 at Gateway, continue east on U.S. Highway 62 for 0.4 miles to a gravel access road on the right (south) side of U.S. Highway 62 (marked with a sign). Follow the gravel access road to the parking area.

