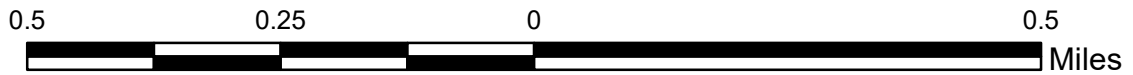
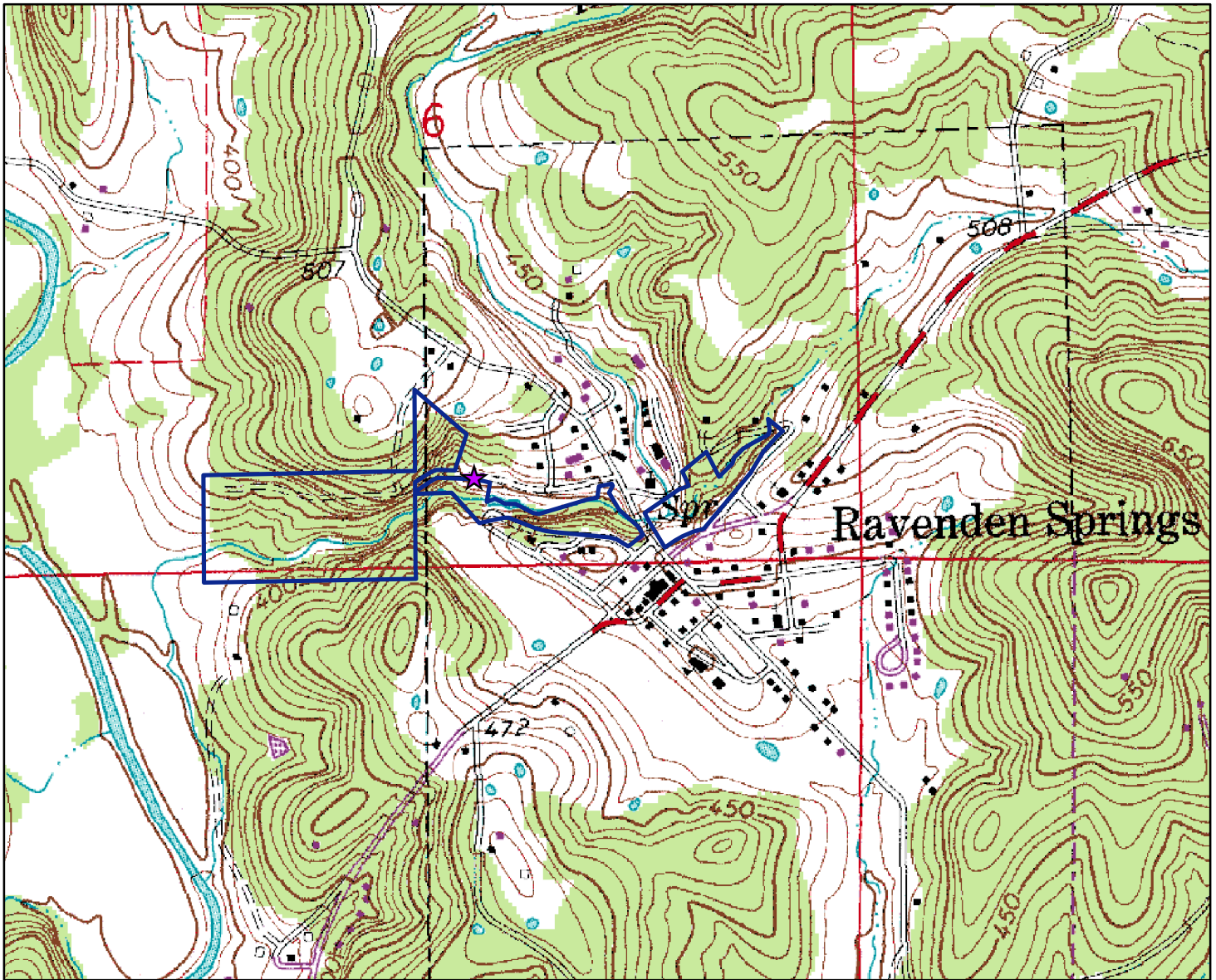


Arkansas Natural Heritage Commission
Department of Arkansas Heritage
System of Natural Areas
Approximate Natural Area Boundaries



★ Parking

Hall's Creek Canyon Natural Area

County: Randolph Date Added To System: 2019 Acreage: 32.44
USGS Topographic Quadrangle: Ravenden Springs 7.5
Township/Range: T19N R2W Section(s): S6
Latitude/Longitude of Parking: 36.318004/-91.229033
Contour Interval: 10 ft.

Directions: From Ravenden (Junction of US Highway 412 and State Highway 90) head North on State Highway 90 for approximately 6.3 miles. Turn left onto Upper Janes Creek Rd. Travel for 0.10 and turn left onto Canon/Canyon Street. The parking area is located at the end of the street.

